

# Effects of extracts from goji berry (*Lycium barbarum*), green tea (*Camellia sinensis*), and persimmon (*Diospyros kaki*) leaves in a dry eye model of mice

Alper Başa<sup>1</sup>

ID 0000-0002-7850-8889

Ibrahim Canpolat<sup>1</sup>

ID 0000-0001-7196-5529

Kadri Kulualp<sup>2\*</sup>

ID 0000-0002-5877-0054

Abdullah Aslan<sup>3</sup>

ID 0000-0002-6243-4221

Yesari Eroksuz<sup>4</sup>

ID 0000-0001-5962-8810

Sema Çakir-Bayrak<sup>5</sup>

ID 0000-0003-0355-8897

Gökhan Gökdere<sup>6</sup>

ID 0000-0001-7004-7670

<sup>1</sup> Firat University. Faculty of Veterinary Medicine.  
Department of Surgery.  
Elazığ, Turkey.

<sup>2</sup> Dokuz Eylül University.  
Faculty of Veterinary Medicine.  
Department of Surgery.  
İzmir, Turkey.

<sup>3</sup> Firat University. Faculty of Science.  
Department of Molecular Biology and Genetics.  
Elazığ, Turkey.

<sup>4</sup> Firat University. Faculty of Veterinary Medicine.  
Department of Pathology.  
Elazığ, Turkey.

<sup>5</sup> Bozok University. Faculty of Veterinary Medicine.  
Department of Surgery.  
Yozgat, Turkey.

<sup>6</sup> Firat University. Faculty of Science.  
Department of Statistics.  
Elazığ, Turkey.

\*Corresponding author

Email address:

kadri.kulualp@deu.edu.tr

## Abstract

This study aimed to investigate the effects of goji berry (*Lycium barbarum*) [GB], green tea (*Camellia sinensis*) [GT], and persimmon (*Diospyros kaki*) [DK] leaf extracts in a mouse dry eye (DE) model. Fifty-six eyes from 28 female BALB/c mice were equally divided into the following groups: control, GB, GT, and DK (left eye groups); DE, DE + GB, DE + GT, DE + DK (right eye groups). The DE model was induced in right eye groups by topical administration of 5 µL of 0.2 % benzalkonium chloride twice daily for 14 days. A 1 % extract solution of GB, GT, and DK was instilled in the DE + GB, DE + GT, and DE + DK groups between days 15 and 30, respectively. In the DE group, only 0.9 % NaCl was instilled during this period. All groups were evaluated for aqueous tear production rate, corneal fluorescein staining, and tear break-up time (TBUT). Histopathological and Western blot analyses performed after euthanasia. On day 15, aqueous tear production decreased, corneal fluorescein staining scores increased, and TBUT was shortened in right eye groups compared to left eye groups ( $P < 0.05$ ). At the end of the study, no significant differences were observed among the extract-treated DE groups regarding clinical parameters ( $P > 0.05$ ). However, based on histopathological and molecular analyses, the GT group demonstrated the most beneficial effect without side effects ( $P < 0.05$ ). These results suggest that 0.1 % GT leaf extract may be a potential therapeutic agent for DE.

**Keywords:** Dry eye; Inflammation; Phytotherapy; Precorneal Tear Film; Tear hyperosmolarity; Treatment.

Submitted: 2024-07-24

Accepted: 2025-03-10

Published: 2025-04-24

Additional information and declarations  
can be found on page 14

© Copyright 2025  
Alper Başa et al.



Distributed under Creative Commons CC-BY 4.0

## Cite this as:

Başa A, Canpolat I, Kulualp K, Aslan A, Eroksuz Y, Çakir-Bayrak S, Gökdere G. Effects of extracts from goji berry (*Lycium barbarum*), green tea (*Camellia sinensis*), and persimmon (*Diospyros kaki*) leaves in a dry eye model of mice. *Veterinaria Mexico OA*. 2025;12. doi: 10.22201/fmvz.24486760e.2025.1366.

## Study contribution

Tear hyperosmolarity and tear film instability, along with the inflammatory process that triggers these factors, play a key role in the pathogenesis of dry eye. Anti-inflammatory therapy has become a common strategy in the treatment of dry eye disease, as inflammation is the primary factor driving disease development. Many herbal extracts with broad-spectrum effects, including anti-inflammatory, antioxidative, and immunomodulatory properties, remain among the current treatment options for dry eye. This study aimed to compare the therapeutic effects of the topical application of extracts from goji berry, green tea, and *Diospyros kaki* leaves in a mouse dry eye model, in terms of histopathologic and biochemical. At the end of the study, GT was found to have the most beneficial effect among these agents. These results suggest that GT may serve as a potential herbal alternative for the treatment of dry eye.

## Introduction

Dry eye (DE) is an inflammatory disease characterized by clinical symptoms, including burning, stinging, and a foreign body sensation, which develop due to tear film instability and hyperosmolarity.<sup>(1)</sup> Key signaling pathways play a central role in the pathogenesis of DE by stimulating the release of pro-inflammatory cytokines such as nuclear factor kappa B (NF- $\kappa$ B). Excessive cytokine release leads to tear film instability and hyperosmolarity on the ocular surface. In recent years, the inhibition of inflammatory responses has become one of the critical issues that researchers focus on in the treatment of DE.<sup>(2–4)</sup>

Many herbal extracts with a broad spectrum of effects, including anti-inflammatory, antioxidative, immunomodulatory, and anti-aging properties, remain among the current treatment options for DE.<sup>(3)</sup> Goji berry (GB) is a flavonoid-rich plant widely used as a flavoring ingredient in Asian cuisine.<sup>(5)</sup> GB has also been used as a therapeutic agent in various diseases due to its broad spectrum of biological activities. It has been reported to exert an ameliorative effect when used both topically and orally in DE patients.<sup>(6, 7)</sup> Green tea (GT) is a low-molecular-weight plant extract containing catechins such as epigallocatechin gallate (EGCG), which exhibits a broad range of biological activities.<sup>(8, 9)</sup>

EGCG has been reported to reduce inflammation and prevent osmolarity increases by suppressing cytokine release in DE cases.<sup>(10, 11)</sup> *Diospyros kaki* (DK), a fruit cultivated in Asia for many years, is also known as persimmon.<sup>(12)</sup> Its leaves contain bioactive compounds such as terpenoids and flavonoids, which possess beneficial anti-inflammatory and antioxidant properties.<sup>(13)</sup> In a mouse model of DE, orally administered DK has been reported to suppress ocular inflammation and improve clinical signs of the disease.<sup>(14)</sup> The study aimed was to compare the therapeutic effects of the topical administration of extracts from GB, GT, and DK leaves in an experimentally induced mouse dry eye model, using histopathological and biochemical analyses.

## Materials and methods

### *Ethical statement*

This study was conducted in accordance with the Association for Research in Vision and Ophthalmology (ARVO) Statement for the Use of Animals in Ophthalmic and Vision Research and was approved by the Firat University Animal Experiments Local Ethics Committee (No:2018/138).

### *Preparation of leaf extracts*

GB, GT, and DK leaves were dried in air and then ground into powder in the laboratory using an herb grinder. Twenty-five grams of powdered leaves was extracted with 95 % ethanol in a volume of 250 mL under sterile conditions for 12 hours at room temperature. Filtration was then performed using Whatman No. 4 filter paper (GE Healthcare, USA). This step was repeated three times, and the obtained extracts were concentrated to 10 % (w/v) by evaporation under reduced pressure in a rotary evaporator at 40 °C. The extracts, prepared separately for each leaf type, were then diluted with 0.9 % sterile saline solution to a final concentration of 0.1 % (v/v) and stored in sterile bottles under cold chain condition until use.<sup>(15)</sup>

### *Animals*

Power analysis was used to estimate the sample size, which was determined to be 28, with a 3 % margin of error at a significance level of 0.05 and an 80 % power value (Type I error = 0.05; statistical power = 0.80). The study included 56 eyes (28 left, 28 right) from 28 female BALB/c mice, aged 6-8 weeks, with an average weight of 16–18 g. All animals were housed in a controlled environment with an ambient temperature of 22 °C ± 1 °C, relative humidity of 60 % ± 10 %, a 12:12 light-dark cycle, and no food or water restriction. Mice deemed healthy based on clinical and ophthalmological examinations were included in the study. One week before the experiment, all mice were transferred to an independent room and housed in conventional mouse cages. The cages had an average size of 265 × 205 × 140 mm and a floor housing space of 350 cm<sup>2</sup> (Euro Type 2 cage type, Tecniplast, Italy). The average weight of the study mice was 25 g, and the recommended housing area for a 25 g mouse in multi-animal housing is 77.4 cm<sup>2</sup>. Accordingly, four mice were placed in each cage (for 350 cm<sup>2</sup> of housing space). During this adaptation period, mice were acclimated to a funnel-shaped restraint made of specially designed rigid plastic to prevent self-injury and ensure researcher safety during measurements. This device restricted the mice's movements, allowing for more precise instillation of topical agents and accurate execution of parametric tests.

### *Mouse model of Dry eye and instillation of extracts*

A total of 56 eyes were divided into control, GB, GT, and DK groups (7 × 4 = 28) for the left eyes, and DE, DE + GB, DE + GT and DE + DK groups (7 × 4 = 28) for the right eyes. All left eye groups received 0.9 % saline (Bioflex/Osel-Istanbul) at a dose of 5 µL twice daily, once at 8:00 am and again at 8:00 pm, for 14 days.

Between days 15 and 30, the control group continued to receive 0.9 % saline, to the control group, 0.1 % GT leaf extract to the GT group, 0.1 % GB leaf extract to the GB group and 0.1 % DK leaf extract to the DK group at a dose of 5  $\mu$ L three times a day (at 9:00 am, 2:00 pm, and 8:00 pm). To induce DE model in mice, benzalkonium chloride (BAC) (Sigma–Aldrich) was prepared in a sterile PBS (8 g NaCl, 0.2 g/L KCl, 1.44 g/L Na<sub>2</sub>HPO<sub>4</sub>, pH 7.4) at a concentration of 0.2 % (w/v).<sup>(16)</sup> All right eyes groups received 0.2 % BAC at a dose of 5  $\mu$ L twice daily 8:00 am, and at 8:00 pm for the first 14 days to induce the DE. Between days 15 and 30, a microinjector (901 N, Hamilton, USA) was used to instill 0.9% saline in the DE group, 0.1 % GB leaf extract in the DE + GB group, 0.1 % GT leaf extract in the DE + GT group and 0.1 % DK leaf extract in the DE + DK group, at a dose of 5  $\mu$ L three times daily (at 9:00 am, 2:00 pm, and 8:00 pm). Parameters such as excessive weight loss, hair loss, and a significant reduction in feed and water consumption were established as humane experimental endpoint criteria, Animals were monitored and recorded accordingly until the end of the study.

### *Procedure of the clinical parametric tests*

In all the groups, the aqueous tear production rate, tear break-up time (TBUT), and corneal fluorescein staining tests were measured at baseline and on days 15, 20, 25, and 30 at the same time points (between 9:00 am and 12:00 pm). During each measurement, any ocular abnormalities (photophobia, ocular discharge and redness, conjunctivitis, keratitis) were also noted.

**Aqueous tear production rate:** The endodontic absorbent paper point test was used to determine the aqueous tear production rate. Test strips (Roeko, Germany) were placed in the lower conjunctival fornix of the right and left eyes using forceps and left in place for 1 minute. After removal, the degree of wetness was measured under normal light using a millimetric scale (Zone Quick-Menicon, Nagoya, Japan).<sup>(16)</sup>

**TBUT:** 1 % fluorescein sodium solution (Alcon, Germany) was instilled into the right and left eyes of the subjects at a dose of 1  $\mu$ L using a micro-injector (901 N, Hamilton, USA). After manually closing and opening the eyelids three times, the time to the first tear breakup (the first appearance of dry spots) was recorded using a cobalt blue filter under a slit lamp biomicroscope (XL-1, Shin-Nippon, Osaka, Japan).<sup>(16)</sup>

**Corneal fluorescein staining:** This test was performed 90 seconds after TBUT using a slit lamp with a cobalt blue filter. Corneal lesions were photographed under an operating microscope.<sup>(17)</sup> Lesions were scored as follows:

- 0: no staining on the corneal surface.
- 1: staining area  $\leq$  1/8 of the corneal surface.
- 2: staining area  $\leq$  1/4 of the corneal surface.
- 3: staining area  $\leq$  1/2 of the corneal surface.
- 4: staining area  $\leq$  1/2 or covering the entire corneal surface.<sup>(18)</sup>

### *Histopathological analysis*

At the end of the study, the mice were decapitated using sharp, heavy-duty scissors after deep anesthesia with 3 % isoflurane inhalation. Left and right eye tissues were carefully collected and stored at -80 °C until histopathological analyses were performed. For histopathological analysis, eyes were trimmed in the dorso-ventral position near the optic nerve and fixed with 10 % buffered formaldehyde. After fixation, tissues were dehydrated, and embedded in paraffin blocks. 3–5 micrometer sections were stained with H&E and periodic acid-Shiff (PAS) stains. The number of vessels and inflammatory cells in the cornea was evaluated under a light microscope.<sup>(14)</sup>

### *Western blot analysis*

Eye tissue samples were washed with cold PBS, then cut into small pieces and homogenized in lysis buffer using a mechanical and glass homogenizer (0.5 M Tris; pH:8, EDTA,  $\beta$ -mercaptoethanol, phenylmethylsulphonyl fluoride, NP-40, Proteinase K, Dithiothreitol). Shredded tissue samples were dried at 14 000 rpm for 5 min. The supernatant was collected and stored at -80 °C until use. Primary and secondary antibodies used in Western blotting (TNF- $\alpha$  antibody (52B83) ab8348, IL-1 $\alpha$  antibody (ALF-161) sc12741, beta actin E-AB-20094, Nrf-2 antibody ab137550, NF- $\kappa$ B antibody sc-8008 primary antibodies; m-IgGk BP-HRP sc-516102 and ab97023 secondary antibodies) were obtained from Santa Cruz Biotechnology (Germany), Abcam and Elabscience (USA). Protein samples were run on a 12 % gel using the SDS-PAGE technique. The proteins were transferred to a nitrocellulose membrane via Western blotting, and their synthesis rates were assessed. Finally, the protein levels observed on the nitrocellulose membrane were quantified using a density determination analysis system.<sup>(19, 20)</sup>

### *Statistical analysis*

All data were analyzed using the Statistical Package for the Social Sciences (SPSS 21, SPSS Inc, Chicago, IL, USA). A one-way analysis of variance (ANOVA) was used to evaluate the aqueous tear production rate, corneal staining test, and TBUT results within each group. The Friedman test was applied to assess non-parametric repeated measures between groups over time. The Wilcoxon test was used to determine significant time interval differences between groups. To compare groups in the statistical evaluation of the Western blot analysis, a one-way ANOVA followed by a post hoc Duncan test was applied. Differences between groups in the histopathological analysis were assessed using one-way ANOVA, with pairwise comparisons performed using the Tukey post hoc test. A P-value of < 0.05 was considered statistically significant.

## Results

### Aqueous tear production rate

No statistically significant differences were observed in the aqueous tear production rate between the left and right eyes of mice in any group on day 0 (baseline) (Table 1). The mean EAPPTT values of all left eye groups remained stable throughout the study, with no statistically significant differences from baseline to the end of the experiment (Table 1). On day 15, following the induction of the DE model with BAC in the right eye groups, the mean EAPPTT values were significantly reduced compared to baseline measurement (Table 1). This reduction in the DE group persisted until the end of the study (Table 1). When the mean values of the extract-treated groups were analyzed for therapeutic effect between days 15 and 30, the DE + GT group showed the highest increase. However, this increase was not statistically significant when compared to the other extract-treated groups (Table 1).

**Table 1.** Statistical analysis of EAPPTT data according to measurement times and group variables

Groups	Measurement time (right eye)					
	Baseline* (mm/min)	15 <sup>th</sup> day (mm/min)	20 <sup>th</sup> day (mm/min)	25 <sup>th</sup> day (mm/min)	30 <sup>th</sup> day (mm/min)	P-value
DE	3.85 ± 0.24 <sup>A</sup>	2.35 ± 0.85 <sup>B</sup>	2.14 ± 0.37 <sup>Ba</sup>	2.64 ± 0.74 <sup>Ba</sup>	2.85 ± 0.69 <sup>AB</sup>	0.020
DE + GB	3.71 ± 0.39 <sup>A</sup>	2.50 ± 0.86 <sup>B</sup>	3.28 ± 0.69 <sup>ABb</sup>	4.00 ± 0.50 <sup>ACb</sup>	3.28 ± 0.75 <sup>ABC</sup>	0.018
DE + GT	4.28 ± 0.39 <sup>A</sup>	2.35 ± 0.98 <sup>B</sup>	3.71 ± 0.56 <sup>ACb</sup>	3.92 ± 0.53 <sup>ACb</sup>	3.50 ± 0.40 <sup>BC</sup>	0.006
DE + DK	4.07 ± 0.44 <sup>A</sup>	2.71 ± 0.90 <sup>B</sup>	2.42 ± 0.83 <sup>Bac</sup>	3.50 ± 1.08 <sup>ABab</sup>	3.35 ± 0.74 <sup>AB</sup>	0.022
P-value	> 0.05	> 0.05	0.000	0.000	> 0.05	
Groups	Measurement time (left eye)					
	Baseline* (mm/min)	15 <sup>th</sup> day (mm/min)	20 <sup>th</sup> day (mm/min)	25 <sup>th</sup> day (mm/min)	30 <sup>th</sup> day (mm/min)	P-value
DE	4.00 ± 0.00	3.85 ± 0.24	3.85 ± 0.24	3.92 ± 0.18	3.64 ± 0.24	0.053
DE + GB	3.92 ± 0.34	3.92 ± 0.18	4.00 ± 0.00	4.00 ± 0.00	3.64 ± 0.37	0.075
DE + GT	3.92 ± 0.53	4.07 ± 0.18	4.00 ± 0.28	4.07 ± 0.34	3.85 ± 0.24	0.357
DE + DK	3.92 ± 0.34	4.00 ± 0.28	3.78 ± 0.39	4.14 ± 0.24	3.71 ± 0.39	0.178
P-value	> 0.05	> 0.05	> 0.05	> 0.05	> 0.05	

\* Baseline values of the study, a–c: The difference between groups with different letters in the same column is statistically significant ( $P < 0.05$ ), ANOVA, post hoc Tukey.

A–C: The difference between groups with different letters on the same line is important. ( $P < 0.05$ ), Friedman was used for non-parametric tests and Wilcoxon tests for intragroup comparisons. (Mean ± standard deviation). Dry eye (DE). Goji berry (GB). Green tea (GT). Diospyros kaki (DK).



### Tear break-up time

At the beginning of the study, no statistically significant differences were observed in the mean TBUT values between the left and right eyes of all mice. The mean TBUT values of the left eye groups remained stable throughout the study, with no statistically significant differences from baseline to the end of the experiment. However, significant differences were found among the right eye groups. On day 15, the mean TBUT in the right eye groups was significantly shorter than baseline measurements. When the mean TBUT values of the DE + extract groups were evaluated between days 15 and 30, all groups showed a prolongation of TBUT by the end of the study. However, no statistically significant differences were observed between them, and the group with the longest TBUT was DE + GT. The shortest TBUT was detected in the DE group at the end of the study (Table 2).

**Table 2.** Statistical analysis of TBUT data according to measurement times and group variables

Groups	Measurement time (right eye)					
	Baseline* (sec.)	15 <sup>th</sup> day (sec.)	20 <sup>th</sup> day (sec.)	25 <sup>th</sup> day (sec.)	30 <sup>th</sup> day (sec.)	P-value
DE	6.95 ± 0.18 <sup>A</sup>	3.07 ± 0.11 <sup>B</sup>	3.25 ± 0.09 <sup>BCa</sup>	3.74 ± 0.20 <sup>CDa</sup>	4.54 ± 0.17 <sup>ADa</sup>	0.000
DE + GB	6.92 ± 0.18 <sup>A</sup>	2.95 ± 0.12 <sup>B</sup>	4.57 ± 0.17 <sup>BDb</sup>	5.40 ± 0.10 <sup>CDb</sup>	5.99 ± 0.11 <sup>ACbcd</sup>	0.000
DE + GT	6.98 ± 0.12 <sup>A</sup>	3.04 ± 0.11 <sup>B</sup>	5.02 ± 0.13 <sup>BCc</sup>	5.96 ± 0.12 <sup>CDd</sup>	6.14 ± 0.08 <sup>ADd</sup>	0.000
DE + DK	6.98 ± 0.10 <sup>A</sup>	2.99 ± 0.11 <sup>B</sup>	4.80 ± 0.18 <sup>BCbc</sup>	5.75 ± 0.19 <sup>CDcd</sup>	5.96 ± 0.12 <sup>ADcd</sup>	0.000
P-value	> 0.05	> 0.05	0.000	0.000	0.000	
Groups	Measurement time (left eye)					
	Baseline* (sec.)	15 <sup>th</sup> day (sec.)	20 <sup>th</sup> day (sec.)	25 <sup>th</sup> day (sec.)	30 <sup>th</sup> day (sec.)	P-value
DE	7.01 ± 0.09	6.94 ± 0.11	6.96 ± 0.14	6.94 ± 0.14	6.96 ± 0.12	0.613
DE + GB	6.98 ± 0.11	7.04 ± 0.08	6.86 ± 0.11	7.05 ± 0.11	6.98 ± 0.12	0.069
DE + GT	7.00 ± 0.12	6.95 ± 0.11	6.99 ± 0.13	7.00 ± 0.10	7.04 ± 0.09	0.434
DE + DK	7.03 ± 0.05	7.01 ± 0.09	7.01 ± 0.10	7.04 ± 0.10	7.04 ± 0.11	0.741
P-value	> 0.05	> 0.05	> 0.05	> 0.05	> 0.05	

\*Baseline values of the study, a–d: The difference between groups with different letters in the same column is statistically significant ( $P < 0.05$ ), ANOVA, post hoc Tukey.

A–D: The difference between groups with different letters on the same line is important. ( $P < 0.05$ ), Friedman was used for non-parametric tests and Wilcoxon tests for intragroup comparisons. (Mean ± standard deviation). Dry eye (DE). Goji berry (GB). Green tea (GT). Diospyros kaki (DK).

### Corneal fluorescein staining

At baseline, the corneal fluorescein staining scores of both eyes in all groups were recorded as "0". The mean corneal fluorescein staining scores of the left eye groups remained stable throughout the study, with no statistically significant differences from baseline to the end of the experiment. On day 15, the corneal fluorescein staining scores of all right eye groups were significantly higher than baseline. When the changes in the mean corneal fluorescein staining scores of the DE + extract groups between days 15 and 30 were analyzed, corneal staining was slightly reduced in DE + GT group ( $P > 0.05$ , compared to other groups), and in the DE group (Table 3).

**Table 3.** Statistical analysis of corneal fluorescein staining test scores according to measurement times and group variables

Groups	Measurement time (right eye)					
	Baseline* (score)	15 <sup>th</sup> day (score)	20 <sup>th</sup> day (score)	25 <sup>th</sup> day (score)	30 <sup>th</sup> day (score)	P-value
DE	0 <sup>A</sup>	3.00 ± 0.57 <sup>B</sup>	2.42 ± 0.78 <sup>BC</sup>	2.42 ± 0.78 <sup>BC</sup>	2.00 ± 0.57 <sup>C</sup>	0.035
DE + GB	0	3.28 ± 0.75	3.28 ± 0.69	2.28 ± 0.75	2.00 ± 0.57	0.059
DE + GT	0 <sup>A</sup>	3.14 ± 0.37 <sup>B</sup>	3.71 ± 0.56 <sup>BC</sup>	1.42 ± 0.53 <sup>C</sup>	1.42 ± 0.78 <sup>C</sup>	0.003
DE + DK	0 <sup>A</sup>	3.28 ± 0.48 <sup>B</sup>	2.42 ± 0.83 <sup>BC</sup>	2.00 ± 0.57 <sup>C</sup>	1.71 ± 0.75 <sup>C</sup>	0.013
P-value	> 0.05	> 0.05	> 0.05	> 0.05	> 0.05	

Groups	Measurement time (left eye)					
	Baseline* (score)	15 <sup>th</sup> day (score)	20 <sup>th</sup> day (score)	25 <sup>th</sup> day (score)	30 <sup>th</sup> day (score)	P-value
DE	0	0.57 ± 0.53	0.57 ± 0.53	0.42 ± 0.53	0.42 ± 0.53	0.896
DE + GB	0	0.57 ± 0.53	0.57 ± 0.53	0.42 ± 0.53	0.28 ± 0.48	0.724
DE + GT	0	0.57 ± 0.53	0.57 ± 0.53	0.42 ± 0.53	0.14 ± 0.37	0.392
DE + DK	0	0.57 ± 0.53	0.57 ± 0.53	0.42 ± 0.53	0.42 ± 0.53	0.919
P-value	> 0.05	> 0.05	> 0.05	> 0.05	> 0.05	

\*Baseline values of the study, A–C: The difference between groups with different letters in the same column is statistically significant ( $P < 0.05$ ), ANOVA, *post hoc* Tukey.

A–C: The difference between groups with different letters on the same line is important. ( $P < 0.05$ ), Friedman was used for non-parametric tests and Wilcoxon tests for intragroup comparisons. (Mean ± standard deviation). Dry eye (DE). Goji berry (GB). Green tea (GT). Diospyros kaki (DK).

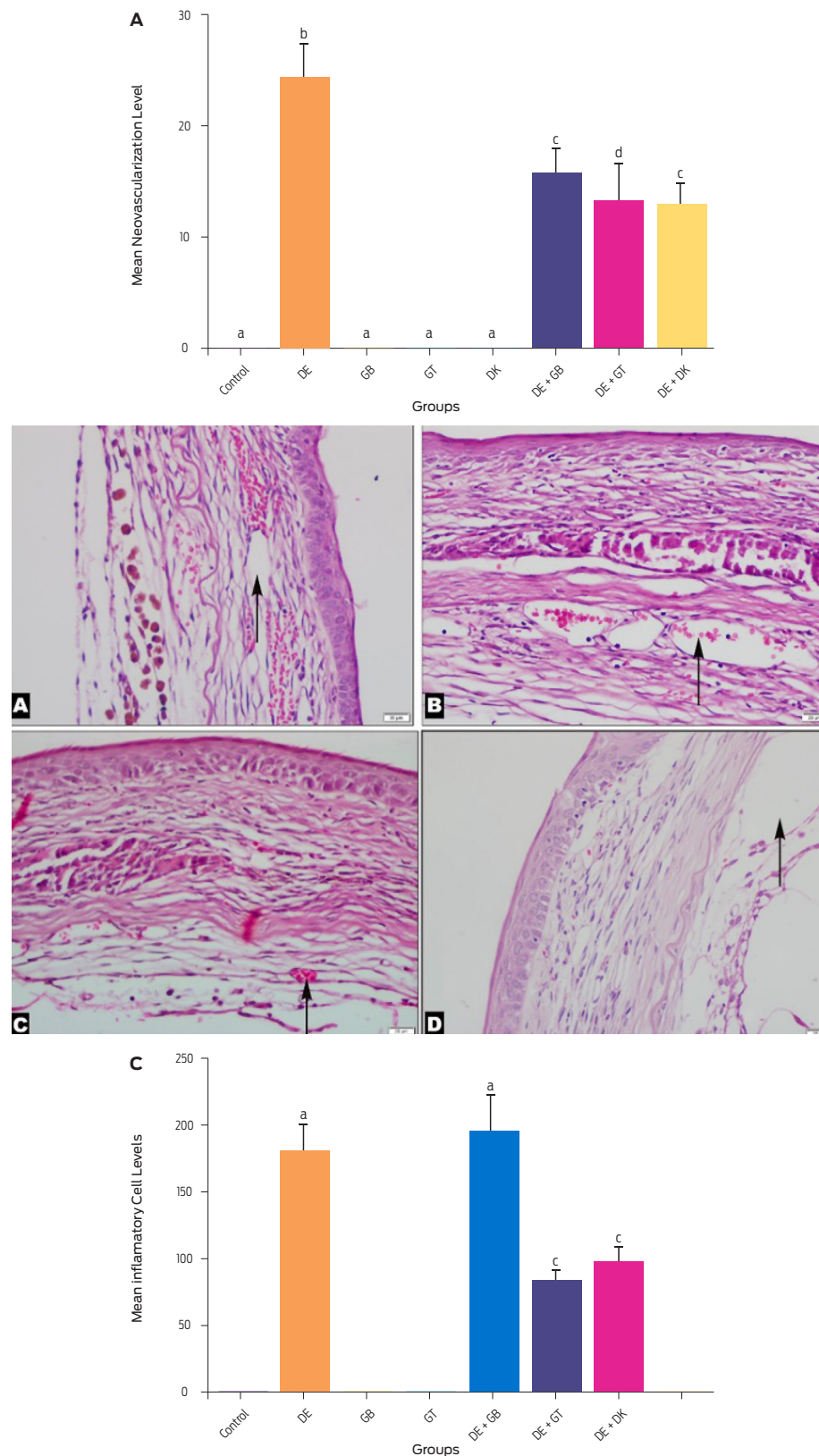
### Histopathological analysis

It was determined that corneal neovascularization was more prominent in the DE group compared to all other groups. The differences were statistically significant. There were no significant differences in corneal neovascularization between the control and GB, GT, DK groups. It was determined that there were statistically significant differences between DE + extract groups. The lowest vascularization was detected in DK + GT group. Hemosiderin-laden macrophages were also found as a sign of chronic hemorrhage in cases with severe neovascularization. The highest number of inflammatory cells in the cornea were detected in the DE and DK + GB groups, but the difference between these groups was not statistically significant. The lowest number of inflammatory cells was found in the control, GB, GT, DK groups. DE + GT and DE + DK had the lowest number of inflammatory cells in the DE + extract groups. There was no significant difference between these groups (Figure 1A).

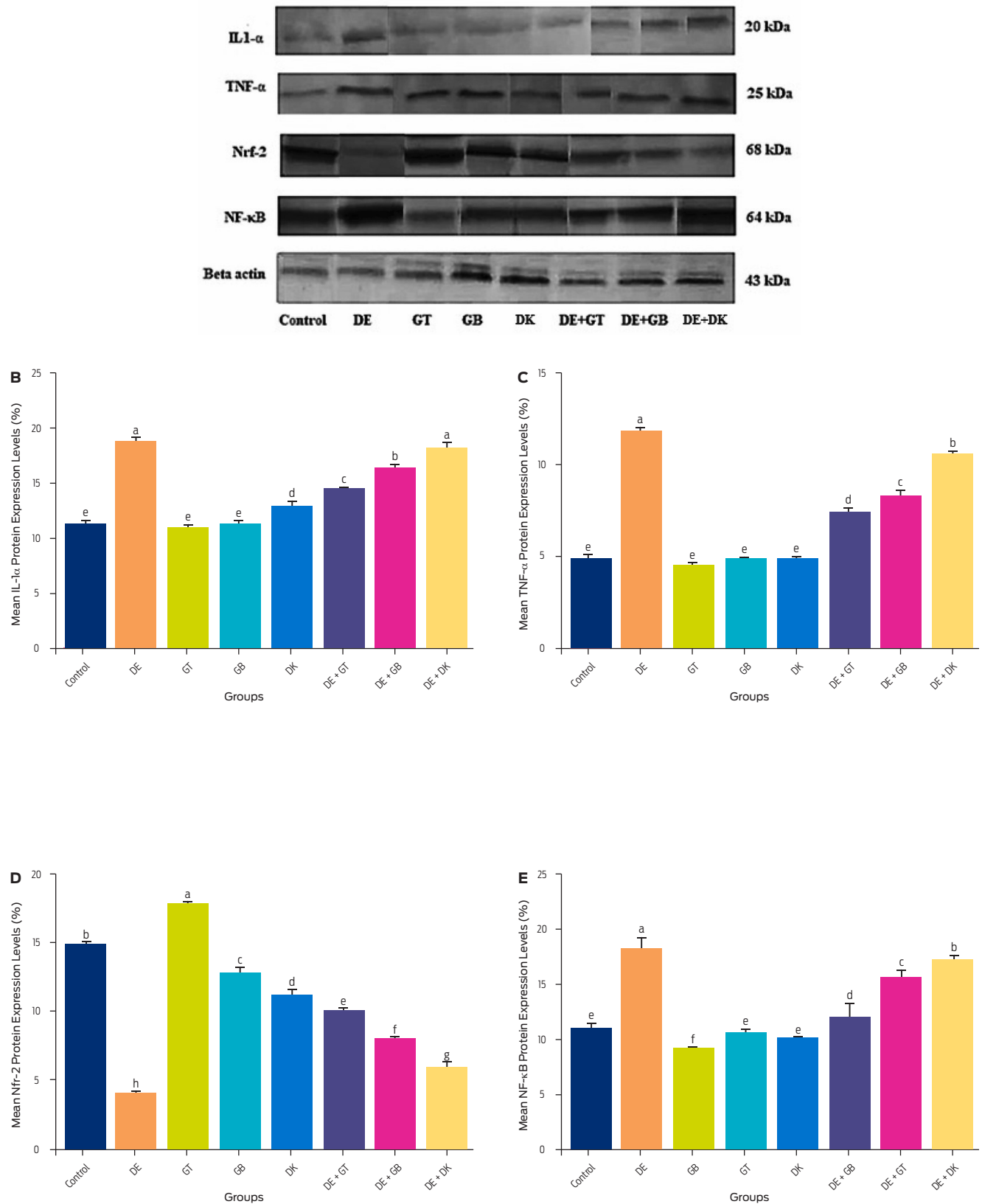
### Western blot analysis

Among all groups, the highest inflammatory expression levels of IL-1 $\alpha$ , TNF- $\alpha$  and NF- $\kappa$ B were detected in the DE group. In DE + extract groups, the lowest pro-inflammatory expression levels of IL-1 $\alpha$ , TNF- $\alpha$  and NF- $\kappa$ B were measured in the DE + GT, while the highest expression levels were measured in the DE + DK groups (Figures 2 A–C, E). Regarding Nrf2, the difference in inflammatory expression levels among all groups were statistically significant (Figure 2A, and D). The highest Nrf2 expression levels were measured in the DE group (Figure 2D). In DE + extract groups, Nrf2 expression levels were highest in the DE + GT and lowest in the DE + DK groups (Figures 2A and D).





**Figure 1.** Mean corneal neovascularization and inflammatory cell levels. Mean neovascularization levels (A). Corneal neovascularization severity in groups (arrows), H-E, Bar: 20  $\mu$ m. A) DE group (case no: 3), B) DE + GB group (case no: 2), C) DE + GT group (case no: 4), D) DE + DK group (case no: 4). (B). Mean inflammatory cell levels in the cornea in groups. \*a-c: Differences between groups are indicated by different letters and this difference is statistically significant ( $P < 0.05$ ). One-way ANOVA post hoc Duncan test (C). Dry eye (DE). Goji berry (GB). Green tea (GT). Diospyros kaki (DK).



**Figure 2.** Western-blot analysis results. Western-blot protein bands (A). IL-1 $\alpha$  protein expression levels (B). TNF- $\alpha$  protein expression levels (C). Nrf2 protein expression levels (D). NF- $\kappa$ B protein expression levels (E). \*a-h: differences between groups are indicated by different letters and this difference is statistically significant ( $P < 0.05$ ). One-Way ANOVA post hoc Duncan test. Dry eye (DE). Goji berry (GB). Green tea (GT). Diospyros kaki (DK).

## Discussion

Dry eye is a multifactorial ocular disease characterized by precorneal tear film (PTF) instability, elevated tear osmolarity, corneal and conjunctival epithelial damage, squamous metaplasia, ocular surface and lacrimal gland dysfunction or inflammation.<sup>(1, 2, 21–24)</sup> Numerous experimental model studies have been conducted to investigate the complex pathogenesis of DE and its treatment options.<sup>(25–31)</sup> BAC application is one of these methods.<sup>(2, 17, 32–36)</sup> Long-term BAC induces foreign body sensation, stinging, redness, corneal edema, and opacity associated with tear evaporation. It has also been reported that BAC causes PTF instability, overexpression of inflammatory cytokines in epithelial cells, and stromal neovascularization.<sup>(36–38)</sup> In recent years, many researchers have used BAC to induce the DE model due to its cytotoxic effects.<sup>(16, 31, 39)</sup> In our study, to establish the DE model, 0.2 % BAC was topically applied to the right eyes of the animals at a dose of 5 µL for 14 days.

A decrease in the aqueous tear production rate results in an increase in ocular surface tension and a decrease in the concentration of substances that nourish and protect the eye. This activates the inflammatory process and triggers DE.<sup>(40)</sup> In many DE models,<sup>(14, 16, 41)</sup> topical application of 0.2 % BAC twice a day for 14 days has been reported to significantly reduce the aqueous tear production rate. Consistent with these studies, in our study, BAC drops were applied to the animals for 14 days to induce the DE model, and EAPTT measurements on day 15 showed a decrease compared to baseline data. In contrast, there was no significant difference in the EAPTT of the animals treated with saline (without BAC) from the beginning to the end of the experiment. In our study, DE + GT showed the highest increase in EAPTT in eyes treated with DE + extract. The other two groups (DE + DK and DE + GB) also showed similar effects. Previous studies have reported varying effects of GT on the aqueous tear production rate in patients with DE. In a study investigating the effects of GT extract on the treatment of patients with meibomian gland dysfunction and DE, GT was found to have beneficial effects on clinical parameters.<sup>(10)</sup> Contrary to these researchers, it has also been reported that GT consumption leads to a decrease in tear composition and PTF quality.<sup>(8)</sup> In our study, the highest increase in aqueous tear production rate was measured in the DE + GT group (especially on day 25). These results suggest that GT has a beneficial effect on this parameter in eyes with DE.

Fluorescein staining is a standard method for detecting ocular surface damage. Fluorescein sodium is a well-tolerated, minimally irritating, and water-soluble dye. Fluorescein is known to stain areas of epithelial erosions, particularly those containing dead and degenerated cells in the cornea.<sup>(42)</sup> Many DE studies using this test have reported that BAC induces corneal epithelial cell desquamation, corneal erosions, and ulcerations.<sup>(2, 17, 39)</sup> Consistent with these findings, our study observed that BAC caused an increase in corneal fluorescein staining scores. In the current study, the most beneficial effect on the corneal staining parameter among the DE + extract groups were measured in the DE + GT group (although there was no significant difference between the other two groups and this group). GT contains a significant amount of EGCG, and one study reported that EGCG reduced the corneal staining score in patients with DE.<sup>(11)</sup> Additionally, other studies have reported that DK<sup>(14, 41, 43)</sup> and GB<sup>(44)</sup> also exhibit beneficial effects similar to GT on corneal fluorescein staining.

Assessing precorneal tear film stability is crucial for detecting mucin and lipid deficiencies as well as meibomian gland dysfunction. Precorneal tear film instability plays a key role in the pathogenesis of DE, and TBUT is a widely used parameter for its measurement.<sup>(42)</sup> In DE models using different doses of BAC,<sup>(2, 17, 45)</sup> this agent has been shown to significantly shorten TBUT by disrupting precorneal tear film stability. In our study, 0.2 % BAC was applied twice daily for 14 days, and TBUT was found to be significantly shortened on day 15 compared to baseline measurements. These results support the hypothesis that BAC disrupts precorneal tear film stability. All three extracts tested in our study had a beneficial effect on TBUT in eyes with DE, with the DE + GT group exhibiting the longest TBUT. Similar to the results of our study, there are many studies reporting beneficial effects of GT,<sup>(11)</sup> GB,<sup>(44)</sup> and DK<sup>(14, 41, 43)</sup> on TBUT.

In numerous *in vivo* studies involving mice,<sup>(17, 46)</sup> rats,<sup>(47)</sup> cats,<sup>(48)</sup> and rabbits,<sup>(49)</sup> BAC has been reported to induce corneal and conjunctival inflammatory cell infiltration, excessive release of pre-inflammatory mediators, corneal epithelial desquamation, erosions, ulcerations, and corneal neovascularization. In our study, we used the parameters of corneal neovascularization and the number of inflammatory cells, which are histopathological analyses, to determine both the damage caused by BAC and the anti-inflammatory effects of the extracts on eyes with DE. We found that 0.2 % BAC, applied twice daily for 14 days, significantly increased corneal vascularization and the number of inflammatory cells. On the other hand, we did not observe any pathology or abnormality in terms of these parameters in eyes without BAC.

These results show that BAC triggers the inflammatory process on the ocular surface, as reported by many researchers.<sup>(17, 46–49)</sup> Among the DE + extract groups, the groups with the lowest corneal neovascularization and the number of inflammatory cells were DE + GT and DE + DK. DK is a fruit with previously reported anti-inflammatory, antioxidant and antiapoptotic effects.<sup>(12, 14, 15)</sup> In a study investigating the effect of DK leaf extract in cases of DE, DK was found to suppress the inflammatory response.<sup>(14)</sup> Additionally, DK has been reported to inhibit corneal neovascularization in alkali burns.<sup>(50)</sup> Another experimental study reported that EGCG, the major polyphenol component of green tea leaves, suppressed corneal neovascularization and inflammation.<sup>(51)</sup> The results obtained from these studies and our study confirm that DK and GT inhibit corneal neovascularization and the number of inflammatory cells on the ocular surface.

There is strong evidence that ocular surface inflammation is key to the pathogenesis of DE. It plays a role in both the initiation and progression of this condition.<sup>(2, 17)</sup> It has been reported that PTF instability and an increase in tear osmolarity cause an increase in the concentrations of inflammatory cytokines and chemokines in the lacrimal functional unit.<sup>(23)</sup> Numerous experimental studies have employed various diagnostic techniques to assess the inflammatory changes induced by DE in ocular tissues and to quantify the levels of involved markers.<sup>(14, 39, 44)</sup> In this study, the levels of IL-1 $\alpha$ , TNF- $\alpha$ , Nrf2 and NF- $\kappa$ B in corneoconjunctival tissue samples were analyzed using Western blot. IL-1 $\beta$  and TNF- $\alpha$  are typical proinflammatory cytokines that contribute to ocular surface inflammation.<sup>(52)</sup>

In several DE models, 0.2 % BAC has been reported to cause significant increases in levels of TNF- $\alpha$  and IL-1 $\alpha$  in corneal and conjunctival tissues of animals.<sup>(17, 45)</sup> NF- $\kappa$ B plays a key role as a transcription factor in the production

of these cytokines.<sup>(53)</sup> It has been suggested that hyperosmolarity in the ocular surface epithelium is associated with an increase in NF- $\kappa$ B and this increase is effective in triggering the inflammatory process.<sup>(54)</sup> In one study, BAC was reported to increase intracellular NF- $\kappa$ B levels by inducing corneal epithelial toxicity.<sup>(55)</sup> Nrf2 is a critical nuclear transcription factor that functions as part of the systemic antioxidant defense system against environmental stressors.<sup>(56)</sup> Activation of the Nrf2/ARE system has been reported to play a significant role in the disruption of the pro-inflammatory oxidative stress cycle, which causes overproduction of NF- $\kappa$ B and cytokines.<sup>(57)</sup>

The highest levels of IL-1 $\alpha$ , TNF- $\alpha$ , and NF- $\kappa$ B and the lowest levels of Nrf2 eyes of the DE group indicate that BAC induces an inflammatory response and oxidative stress in corneoconjunctival tissues in terms of these markers. Between the DE + extract groups, the DE + GT group had the lowest levels of proinflammatory cytokines (IL-1 $\alpha$ , TNF- $\alpha$ ) and NF- $\kappa$ B, which plays a significant role in the activation of these cytokines, and the highest levels of Nrf2, an antioxidative transcription factor. In a study investigating the anti-inflammatory and anti-oxidative effects of green tea polyphenol EGCG in human corneal epithelial cells, it was reported that EGCG inhibited NF- $\kappa$ B activation and decreased IL-1 $\alpha$  release.<sup>(58)</sup> In another DE model, both 0.01 % and 0.01 % EGCG were reported to reduce TNF- $\alpha$  and IL-1 $\beta$  release.<sup>(11)</sup> Similarly, in the current study, NF- $\kappa$ B and proinflammatory cytokine levels were measured in the lowest DE + GT group.

This result suggests that GT may have reduced cytokine levels through NF- $\kappa$ B inhibition. According to western blot analysis, we determined that GB and DK also showed beneficial effects in eyes with DE, but this effect was less than that of GT. Indeed, studies are reporting that both GB and DK have beneficial effects in different models of DE.<sup>(14, 59, 60)</sup> This study compared the therapeutic effects of extracts from GB, GT, and DK leaves in BAC-induced DE model, we found that all three extracts showed similar and beneficial therapeutic effects in terms of clinical parameters such as aqueous tear production rate, TBUT and corneal fluorescein staining tests. According to corneal neovascularization and the number of inflammatory cell tests and western blot analysis of corneoconjunctival tissues collected at the end of the study, GT showed the most beneficial effect in the DE model.

These results suggest that the use of clinical parametric tests alone is not sufficient in experimental studies comparing therapeutic effects. These tests should be supported by histopathological and molecular analyses. The molecular analyses in our research, in addition to the protein levels of proinflammatory cytokines such as IL-1 $\alpha$  and TNF- $\alpha$ , the protein levels of nuclear transcription factors such as NF- $\kappa$ B, which activate these cytokines and plays important roles in the pathogenesis of DE, were also measured. In this way, the role of the NF- $\kappa$ B pathway in the anti-inflammatory effects of the agents was also revealed. In addition to these markers, Nrf2 was also chosen in order to determine whether the effects of the compounds were related to their antioxidant activity. In future studies investigating the therapeutic effects of these extracts, it may be necessary to identify other pathways that play a key role in the pathogenesis of DE and that initiate the inflammatory process, using different molecular techniques.

On the other hand, while there is only one study investigating the effect of topical application of GB leaf extract on DE.<sup>(20)</sup> The effect of topical application of extracts from GT and DK leaves on DE has not yet been studied. There are studies

using only EGCG, which is found in GT. However, GT does not contain only EGCG. This is the first study to investigate the effects of the topical application of GT and DK leaf extracts on DE. In this study, we also used the GB, GT, and DK groups (without the DE model) to determine the possible adverse effects (if any) of the extracts and found that all three extracts had no cause adverse effects on the ocular surface.

---

## Data availability

All relevant data are included in the article and can be shared as a file upon request.

## Acknowledgments

Thanks to Prof. Dr. Meltem Kumas Kulualp for English editing and reviewing and the staff of Firat University Experimental Research Centre for their help in the experimental phase.

## Funding statement

This study was financially supported by Firat University Scientific Research Projects Unit (Project Number: V.F.19.15). A part of our project work was presented orally at the 8th International Congress on Veterinary and Animal Sciences (ICVAS 2023), Turkey.

## Conflicts of interest

The authors have no conflict of interest to declare in regard to this publication.

## Author contributions

Conceptualization: A Başa, K Kulualp.

Data curation: G Gökdere, A Başa.

Formal analysis: G Gökdere, A Başa, K Kulualp.

Funding acquisition: I Canpolat.

Investigation: A Başa, K Kulualp.

Methodology: K Kulualp, A Aslan, I Canpolat, A Başa, S Çakir Bayrak, Y Eroksuz, G Gökdere.

Project administration: A Başa, I Canpolat, K Kulualp.

Resources: K Kulualp, A Başa.

Software: A Aslan, G Gökdere.

Supervision: I Canpolat, A Aslan.

Validation: I Canpolat.

Visualization: A Aslan, K Kulualp, A Başa.

Writing-original draft: K Kulualp, A Başa.

Writing-review and editing: S Çakir Bayrak, A Aslan, K Kulualp, I Canpolat, A Başa.

## References

1. Barabino S, Benítez-Del-Castillo JM. Dry eye disease pathogenesis and clinical signs: searching for correspondence in the clinical practice. *European Review for Medical and Pharmacological Sciences*. 2024;28(5):1881–1890. doi: 10.26355/eurev\_202403\_35602.



2. Zhang Z, Yang WZ, Zhu ZZ, Hu QQ, Chen YF, He H, *et al.* Therapeutic effects of topical doxycycline in a benzalkonium chloride-induced mouse dry eye model. *Investigative Ophthalmology and Visual Science*. 2014;55(5):2963–2974. doi: 10.1167/iovs.13-13577.
3. Memarzadeh E, Luther T, Heidari-Soureshjani S. Effect and mechanisms of medicinal plants on dry eye disease: a systematic review. *Journal of Clinical and Diagnostic Research*. 2018;12(9):1–4. doi: 10.7860/JCDR/2018/36409.12042.
4. Kojima T, Dogru M, Kawashima M, Nakamura S, Tsubota K. Advances in the diagnosis and treatment of dry eye. *Progress in Retinal and Eye Research*. 2020;78:100842. doi: 10.1016/j.preteyeres.2020.100842.
5. Potterat O. Goji (*Lycium barbarum* and *L. chinense*): phytochemistry, pharmacology and safety in the perspective of traditional uses and recent popularity. *Planta Medica*. 2010; 76(1):7–19. doi: 10.1055/s-0029-1186218.
6. Chan HC, Chang RC, Koon-Ching A, Chiu K, Yuen WH, Zee SY, *et al.* Neuroprotective effects of *Lycium barbarum* Lynn on protecting retinal ganglion cells in an ocular hypertension model of glaucoma. *Experimental Neurology*. 2007;203(1):269–273. doi: 10.1016/j.expneurol.2006.05.031.
7. Bucheli P, Vidal K, Shen L, Gu Z, Zhang C, Miller LE, *et al.* Goji berry effects on macular characteristics and plasma antioxidant levels. *Optometry and Vision Science*. 2011;88(2):257–262. doi: 10.1097/OPX.0b013e318205a18f.
8. Masmali AM, Alanazi SA, Alotaibi AG, Fagehi R, Abusharaha A, El-Hiti GA. The acute effect of a single dose of green tea on the quality and quantity of tears in normal eye subjects. *Clinical Ophthalmology*. 2019;13:605–610. doi: 10.2147/OPTH.S201127.
9. Yoneyama S, Kawai K, Tsuno NH, Okaji Y, Asakage M, Tsuchiya T, *et al.* Epigallocatechin gallate affects human dendritic cell differentiation and maturation. *Journal of Allergy and Clinical Immunology*. 2008;121(1):209–214. doi: 10.1016/j.jaci.2007.08.026.
10. Nejabat M, Reza SA, Zadmehr M, Yasemi M, Sobhani Z. Efficacy of green tea extract for treatment of dry eye and meibomian gland dysfunction; a double-blind randomized controlled clinical trial study. *Journal of Clinical and Diagnostic Research*. 2017;11(2):5–8. doi: 10.7860/JCDR/2017/23336.9426.
11. Lee HS, Chauhan SK, Okanobo A, Nallasamy N, Dana R. Therapeutic efficacy of topical epigallocatechin gallate in murine dry eye. *Cornea*. 2011; 30(12):1465–1840. doi: 10.1097/ICO.0b013e31821c9b5a.
12. Xie C, Xie Z, Xu X, Yang D. Persimmon (*Diospyros kaki* L.) leaves: a review on traditional uses, phytochemistry and pharmacological properties. *Journal of Ethnopharmacology*. 2015;163:229–240. doi: 10.1016/j.jep.2015.01.007.
13. Rauf A, Uddin G, Patel S, Khan A, Halim SA, Bawazeer S, *et al.* *Diospyros*, an under-utilized, multi-purpose plant genus: a review. *Biomedicine and Pharmacotherapy*. 2017;91:714–730. doi: 10.1016/j.biopha.2017.05.012.
14. Kim KA, Hyun LC, Jung SH, Jang SJ. The leaves of *Diospyros kaki* exert beneficial effects on a benzalkonium chloride-induced murine dry eye model. *Molecular Vision*. 2016;22:284–293. PMID: PMC4818957.
15. Kim KA, Kang SW, Ahn HR, Song Y, Yang SJ, Jung SH. Leaves of persimmon (*Diospyros kaki* Thunb.) ameliorate N-methyl-N-nitrosourea (MNU)-induced retinal degeneration in Mice. *Journal of Agricultural and Food Chemistry*. 2015; 63(35):7750–7759. doi: 10.1021/acs.jafc.5b02578.

16. Kulualp K, Kiliç S, Eröksüz Y, Eröksüz H, Aslan A. Therapeutic effect of bovine amniotic fluid in murine dry eye model. *Japanese Journal of Veterinary Research*. 2020;68(3):171–186. doi: 10.14943/jjvr.68.3.171.
17. Lin Z, Liu X, Zhou T, Wang Y, Bai L, He H, *et al.* A mouse dry eye model induced by topical administration of benzalkonium chloride. *Molecular Vision*. 2011;17:257–264. PMCID: PMC3030605.
18. Kulualp K. Farelerde deneysel kuru göz modeli üzerine farklı terapötik ajanların etkilerinin karşılaştırılması [PHD thesis dissertation]. Türkiye: Fırat Üniversitesi, Sağlık Bilimleri Enstitüsü; 2011.
19. Aslan A, Gök O, Erman O, Kuloglu T. Ellagic acid impedes carbontetrachloride-induced liver damage in rats through suppression of NF- $\kappa$ B, Bcl-2 and regulating Nrf-2 and caspase pathway. *Biomedicine and Pharmacotherapy*. 2018;105:662–669. doi: 10.1016/j.biopha.2018.06.020.
20. Laemmli UK. Cleavage of structural proteins during the assembly of the head of bacteriophage T4. *Nature*. 1970;227(5259):680–685. doi: 10.1038/227680a0.
21. Baudouin C, Rolando M, Benítez Del Castillo JM, Messmer EM, Figueiredo FC, Irkeç M, *et al.* Reconsidering the central role of mucins in dry eye and ocular surface diseases. *Progress in Retinal and Eye Research*. 2019;71:68–87. doi: 10.1016/j.preteyeres.2018.11.007.
22. Suárez-Cortés T, Merino-Inda N, Benítez-del Castillo JM. Tear and ocular surface disease biomarkers: a diagnostic and clinical perspective for ocular allergies and dry eye disease. *Experimental Eye Research*. 2022;221:109121. doi: 10.1016/j.exer.2022.109121.
23. Stern ME, Gao J, Siemasko KF, Beuerman RW, Pflugfelder SC. The role of the lacrimal functional unit in the pathophysiology of dry eye. *Experimental Eye Research*. 2004;78(3):409–416. doi: 10.1016/j.exer.2003.09.003.
24. Huang W, Tourmouzis K, Perry H, Honkanen RA, Rigas B. Animal models of dry eye disease: useful, varied and evolving (Review). *Experimental and Therapeutic Medicine*. 2021;22(6):1394. doi: 10.3892/etm.2021.10830.
25. Mu N, Wang H, Chen D, Wang F, Ji L, Zhang C, Li M, Lu P. A novel rat model of dry eye induced by aerosol exposure of particulate matter. *Investigative Ophthalmology and Visual Science*. 2022;63(1):39. doi: 10.1167/iovs.63.1.39.
26. Singh S, Sharma S, Basu S. Rabbit models of dry eye disease: current understanding and unmet needs for translational research. *Experimental Eye Research*. 2021;206:108538. doi: 10.1016/j.exer.2021.108538.
27. Qin Y, Zhang Y, Liang Q, Xu X, Li Q, Pan Z, *et al.* Labial salivary gland transplantation for severe dry eye in a rhesus monkey model. *Investigative Ophthalmology and Visual Science*. 2018;59(6):2478–2486. doi: 10.1167/iovs.18-23966.
28. Lin N, Chen X, Liu H, Gao N, Liu Z, Li J, *et al.* Ectoine enhances mucin production via restoring IL-13/IFN- $\gamma$  balance in a murine dry eye model. *Investigative Ophthalmology and Visual Science*. 2024;65(6):39. doi: 10.1167/iovs.65.6.39.
29. Carpena-Torres C, Pintor J, Huete-Toral F, Martín-Gil A, Rodríguez-Pomar C, Martínez-Águila A, *et al.* Efficacy of artificial tears based on an extract of *Artemia salina* containing dinucleotides in a rabbit dry eye model. *International Journal of Molecular Sciences*. 2021; 22(21):11999. doi: 10.3390/ijms222111999.
30. Sánchez-Ríos A, Correa-Gallegos EY, Medina-Espinoza JM, Navarro-Sánchez AA, Olvera-Montañaño O, Baiza-Durán L, Muñoz-Villegas P. Validation of a preclinical

- dry eye model in New Zealand white rabbits during and following topical instillation of 1 % ophthalmic atropine sulfate. *Animal Models and Experimental Medicine*. 2022;5(3):266–273. doi: 10.1002/ame2.12218.
31. Kilic S, Kulualp K. Efficacy of several therapeutic agents in a murine model of dry eye syndrome. *Comparative Medicine*. 2016;66(2):112–118. PMID: PMC4825960.
  32. Thacker M, Sahoo A, Reddy AA, Bokara KK, Singh S, Basu S, *et al*. Benzalkonium chloride-induced dry eye disease animal models: current understanding and potential for translational research. *Indian Journal of Ophthalmology*. 2023;71(4):1256–1262. doi: 10.4103/IJO.IJO\_2791\_22.
  33. Xue YL, Miyakawa T, Hayashi Y, Okatomo K, Hu F, Mitani N, *et al*. Isolation and tyrosinase inhibitory effects of polyphenols from the leaves of persimmon, *Diospyros kaki*. *Journal of Agricultural and Food Chemistry*. 2011;59(11):6011–6017. doi: 10.1021/jf200940h.
  34. Yoon KC, Ahn KY, Choi W, Li Z, Choi JS, Lee SH, *et al*. Tear production and ocular surface changes in experimental dry eye after elimination of desiccating stress. *Investigative Ophthalmology and Visual Science*. 2011;52(10):7267–7273. doi: 10.1167/iovs.11-7231.
  35. Datta S, Baudouin C, Brignole-Baudouin F, Denoyer A, Cortopassi GA. The eye drop preservative benzalkonium chloride potently induces mitochondrial dysfunction and preferentially affects LHON mutant cells. *Investigative Ophthalmology and Visual Science*. 2017;58(4):2406–2412. doi: 10.1167/iovs.16-20903.
  36. Yang Q, Zhang Y, Liu X, Wang N, Song Z, Wu K. A Comparison of the effects of benzalkonium chloride on ocular surfaces between C57BL/6 and BALB/c mice. *International Journal of Molecular Sciences*. 2017;18(3):509. doi: 10.3390/ijms18030509.
  37. Baudouin C, Denoyer A, Desbenoit N, Hamm G, Grise A. *In vitro* and *in vivo* experimental studies on trabecular meshwork degeneration induced by benzalkonium chloride (an American Ophthalmological Society thesis). *Transactions of the American Ophthalmological Society*. 2012;110:40–63. PMID: PMC3671366.
  38. Kwon YS, Park JS, Yun SH, Ku SK, Jang KH. A dog dry eye model induced by benzalkonium chloride. *Investigative Ophthalmology and Visual Science*. 2011;52(14):3765.
  39. Kang SW, Kim KA, Lee CH, Yang SJ, Kang TK, Jung JH, *et al*. A standardized extract of *Rhynchosia volubilis* Lour. exerts a protective effect on benzalkonium chloride-induced mouse dry eye model. *Journal of Ethnopharmacology*. 2018;215:91–100. doi: 10.1016/j.jep.2017.12.041.
  40. Lima L, Lange RR, Turner-Giannico A, Montiani-Ferreira F. Evaluation of standardized endodontic paper point tear test in New Zealand white rabbits and comparison between corneal sensitivity followed tear tests. *Veterinary Ophthalmology*. 2015;18(Suppl 1):119–124. doi: 10.1111/vop.12178.
  41. Kim KA, Yang SJ, Kim TJ, Kang SW, Jung SH. Anti-inflammatory effects of *Diospyros kaki* in mouse dry eye model. *Investigative Ophthalmology and Visual Science*. 2016;57(12):408.
  42. Chester T, Garg S, Johnston J, Ayers B, Gupta P. How can we best diagnose severity levels of dry eye disease: current perspectives. *Clinical Ophthalmology*. 2023;17:1587–1604. doi: 10.2147/OPTH.S388289.

43. Lee C, Kim KA, Yang S, Jung S. Protective effect of persimmon leaves (*Diospyros kaki*) on dry eye in an exorbital lacrimal gland excision model of mice. *Investigative Ophthalmology and Visual Science*. 2017;58(8):2252.
44. Chien KJ, Horng CT, Huang YS, Hsieh YH, Wang CJ, Yang JS, *et al*. Effects of *Lycium barbarum* (goji berry) on dry eye disease in rats. *Molecular Medicine Reports*. 2018;17(1):809–818. doi: 10.3892/mmr.2017.7947.
45. Yang C, Gao Q, Liu J, Wu Y, Hou X, Sun L, *et al*. M2 macrophage-derived extracellular vesicles ameliorate Benzalkonium Chloride-induced dry eye. *Experimental Eye Research*. 2024;247:110041. doi: 10.1016/j.exer.2024.110041.
46. Kim YH, Jung JC, Jung SY, Yu S, Lee KW, Park YJ. Comparison of the efficacy of fluorometholone with and without benzalkonium chloride in ocular surface disease. *Cornea*. 2016;35(2): 234–242. doi: 10.1097/ICO.0000000000000695.
47. Shanmugham V, Subban R. Capsanthin from *Capsicum annum* fruits exerts anti-glaucoma, antioxidant, anti-inflammatory activity, and corneal pro-inflammatory cytokine gene expression in a benzalkonium chloride-induced rat dry eye model. *Journal of Food Biochemistry*. 2022;46(10):e14352. doi: 10.1111/jfbc.14352.
48. Bates N, Edwards N. Benzalkonium chloride exposure in cats: a retrospective analysis of 245 cases reported to the Veterinary Poisons Information Service (VPIS). *Veterinary Record*. 2015;176(9): 229. doi: 10.1136/vr.102653.
49. Chen TY, Tseng CL, Lin CA, Lin HY, Venkatesan P, Lai PS. Effects of eye drops containing hyaluronic acid-nimesulide conjugates in a benzalkonium chloride-induced experimental dry eye rabbit model. *Pharmaceutics*. 2021;13(9):1366. doi: 10.3390/pharmaceutics13091366.
50. Yang SJ, Jo H, Kim KA, Ahn HR, Kang SW, Jung SH. *Diospyros kaki* extract inhibits alkali burn-induced corneal neovascularization. *Journal of Medicinal Food*. 2016;19(1):106–109. doi: 10.1089/jmf.2014.3404.
51. Lee HS, Jun JH, Jung EH, Koo BA, Kim YS. Epigallocatechin-3-gallate inhibits ocular neovascularization and vascular permeability in human retinal pigment epithelial and human retinal microvascular endothelial cells via suppression of MMP-9 and VEGF activation. *Molecules*. 2014;19(8):12150–12172. doi: 10.3390/molecules190812150.
52. Li ZZ, Zou YP, Zhu H, Zeng WZ, Ding Y, Su JZ, *et al*. Establishment of a Beagle dog model of dry eye disease. *Translational Vision Science and Technology*. 2023;12(1):2. doi: 10.1167/tvst.12.1.2.
53. Kundu G, Shetty R, D'Souza S, Gorimanipalli B, Koul A, Sethu S. Effect of maqui-berry extract in dry eye disease- A clinical and molecular analysis. *Indian Journal of Ophthalmology*. 2023;71(4):1613–1618. doi: 10.4103/IJO.IJO\_2909\_22.
54. Lan W, Petznick A, Heryati S, Rifada M, Tong L. Nuclear factor- $\kappa$ B: central regulator in ocular surface inflammation and diseases. *The Ocular Surface*. 2012;10(3):137–148. doi: 10.1016/j.jtos.2012.04.001.
55. Galletti JG, Gabelloni ML, Morande PE, Sabbione F, Vermeulen ME, Trevani AS, *et al*. Benzalkonium chloride breaks down conjunctival immunological tolerance in a murine model. *Mucosal Immunology*. 2013;6(1):24–34. doi: 10.1038/mi.2012.44.

56. Liu XF, Zhou DD, Xie T, Malik TH, Lu CB, Li HJ, *et al.* Nrf2, a potential therapeutic target against oxidative stress in corneal diseases. *Oxidative Medicine and Cellular Longevity*. 2017;2017:2326178. doi: 10.1155/2017/2326178.
57. Ahmed SMU, Luo L, Namani A, Wang XJ, Tang X. Nrf2 signaling pathway: Pivotal roles in inflammation. *Biochimica et Biophysica Acta: Molecular Basis of Disease*. 2017;1863(2):585–597. doi: 10.1016/j.bbadis.2016.11.005.
58. Cavet ME, Harrington KL, Vollmer TR, Ward KW, Zhang JZ. Anti-inflammatory and oxidative effects of the green tea polyphenol epigallocatechin gallate in human corneal epithelial cells. *Molecular Vision*. 2011;17:533–542. PMCID: PMC3044696.
59. Yang CC, Chien JY, Chou YY, Ciou JW, Huang SP. The effects of *Lycium chinense*, *Cuscuta chinensis*, *Senna tora*, *Ophiopogon japonicus*, and *Dendrobium nobile* decoction on a dry eye mouse model. *Medicina (Kaunas)*. 2022;58(8):1134. doi: 10.3390/medicina58081134.
60. Qin D, Deng Y, Wang L, Yin H. Therapeutic effects of topical application of *Lycium barbarum* polysaccharide in a murine model of dry eye. *Frontiers in Medicine*. 2022;9:827594. doi: 10.3389/fmed.2022.827594.